

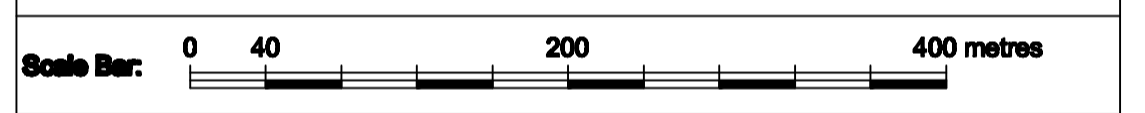
NOTES:

Datum : World Geodetic System 1984 (WGS84)
 Spheroid : World Geodetic System 1984
 Semi-major axis : 6378137.000m
 Inverse flattening : 298.257 223 563m

Datum : Geocentric Datum of Australia 1994 (GDA94)
 Spheroid : Geodetic Reference System (GRS80)
 Semi-major axis : 6378137.000m
 Inverse flattening : 298.257 222 101m
 Projection : UTM zone 49
 CM 111'

Positioning System: Veripos GcGPS (Primary and Secondary)

Side Scan Sonar: 30kHz SM-30 Sonar Mapping System c/w 4.5kHz sub-bottom profiler



LEGEND

☒ Wreck HMAS Sydney (II) : 26°14'45"S, 111°12'55"E
 Wreck Bow Section : 26°14'31"S, 111°12'48"E

--- Designated protection zone boundary under Section 15 of the Historic Shipwrecks Act 1976

NW Corner	26°14'25.9"S,	111°12'40.1"E
NE Corner	26°14'25.9"S,	111°13'00.5"E
SW Corner	26°14'52.4"S,	111°12'40.1"E
SE Corner	26°14'52.4"S,	111°13'00.5"E

0	01.05.08	Issued for use	AW	RB	JS
A	29.04.08	Issued for review	AW	RB	JS
Rev No	Date	Revision	Drawn	Checked	Approved

Company: Contractor: **DCFSUBSEA**

Client Drawing Number: Survey Date: 27th March – 9th April 2008
 Vessel: SV Geosounder

Project: **SEARCH FOR HMAS SYDNEY (II)**

Drawing title and area: **HMAS SYDNEY (II) WRECK LOCATION**

Drawing Scale:	Drawing Size:	Drawing Number:	
Horizontal: 1:4000	A1	27098-002	
	Sequence No.	Sheet No.	Total
	02	02	03